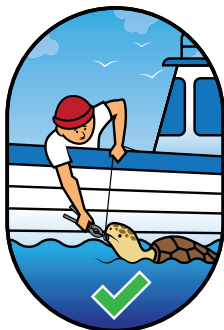


Line remaining on the hook can be lethal to sea turtles if ingested.
Remove the hook only if it can be done without causing harm to you or the sea turtle.



Cut the line close to the mouth to the turtle

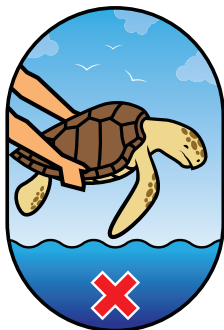


Do not pull the line as it can cause the turtle more harm.



Bring the turtle on-board using a landing net.

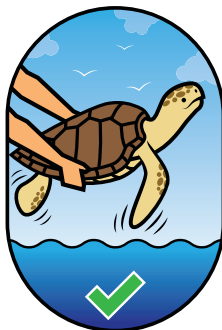
After a prolonged time in the trawling net sea turtles are weak or may seem dead.
If thrown back into the sea, weak turtles may drown.



Do not release weak turtles or turtles that seem to be dead.



Keep turtles on-board until they become active.



Release the turtle only after it recovers mobility.



Life Euro
Turtles



Life MED
TURTLES



www.medturtles.eu

Produced with the assistance of LIFE financial instrument of the EU [LIFE15 NAT/HR/000997 & LIFE18 NAT/IT/000103]. The content does not necessarily reflect the official opinion of the EU.